

## PipeTube Pro – a game-changing commercial vehicle accessory

The first complete redesign of Rhino's hugely popular PipeTube since its launch in 2005, the PipeTube Pro is Europe's new leading system for securely and safely transporting copper pipe, plastic conduit and other lengthy materials. The new stylish design features an upgraded integral locking system and an added rubber seal to reduce water entering the tube. In addition, the PipeTube Pro retains all the features that made it the product of choice for professional van users, such as a market leading carry capacity, twin openings and full professional crash testing and safety accreditation.



20 mins fitting time



### INTERNAL DIMENSIONS

## WEIGHTS AND DIMENSIONS

	L1	L2	W1	H1	D1	D2	Weight	Max Load Limit
RP23 – 3 Meter	3260mm	241mm	186mm	160mm	125mm	127mm	13.85kg	50kg
RP24 – 4 Meter	4260mm	241mm	186mm	160mm	125mm	127mm	18.35kg	50kg
RP25 – 5 Meter	5260mm	241mm	186mm	160mm	125mm	127mm	22.85kg	50kg

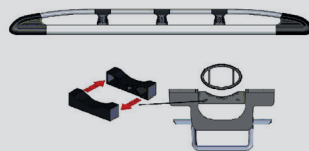
Please note: 4m and 5m PipeTubes will need to be mounted to more bars (i.e. 3 or 4). Please refer to the price application for full specification for each vehicle and fitting instructions prior to installation.

## STANDARD FITTING BRACKET

The PipeTube Pro comes with our standard fitting bracket that is compatible with all Rhino roof bars/racks and roof storage systems from other manufacturers\*.

Every PipeTube Pro is supplied with a set of spacers that are slotted into the bracket in a specific position to suit our AluminiumRack, ModularRack, DeltaBar and KammBar products respectively.

### Rhino AluminiumRack



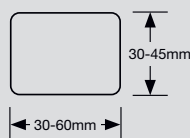
### Rhino DeltaBars



### Rhino KammBar

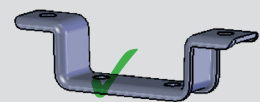


### Bar profile dimensions



\*The PipeTube Pro can also be used on any other roof bar or roof rack system that fits within these dimensions.

**Note:** the system will also need to have the requisite number of cross bars.



Standard fitting bracket

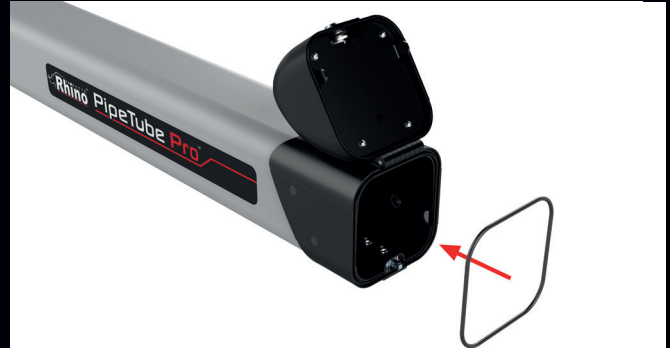
## NEW FEATURES

### INTEGRAL LOCKING SYSTEM



- The nose cone and connecting sleeve have been redesigned so that the lock is housed inside the tube.
- Where the old PipeTube lock sat below the tube, the new design makes the lock harder to get to and provides a more seamless look and feel.
- The new nose cone and sleeve design also incorporates a stronger adjoining hinge located on top of the system.

### RUBBER O-RING SEAL



- Rubber O-ring located within the end of the connecting sleeve, which creates a tight seal when the nose cone is closed.
- The O-ring seal greatly reduces the oxidation process within the tube. Previously, water ingress could have led to a chemical reaction with the aluminium over time, leaving a residue in the tube.

### BOLD NEW REDESIGN



Every element of the PipeTube Pro has been refined to provide stunning aesthetics:

- Striking new powder coated paint finish designed to work with all van colours
- Bold new label and product logo
- Rhino logo on end of the nose cone
- Stylised grooves in tube extrusion

## EXISTING FEATURES

The PipeTube Pro retains all the benefits of the original PipeTube:

- Dual openings at either end
- Key lockable (two keys supplied)
- Universal standard fitting bracket for use on all Rhino van roof bars and racks
- Independently crash tested at Millbrook Proving Ground
- Aerodynamic nose cone design
- Large capacity: 59 x 15mm tubes
- Strong bulkhead within tube protects nose cone

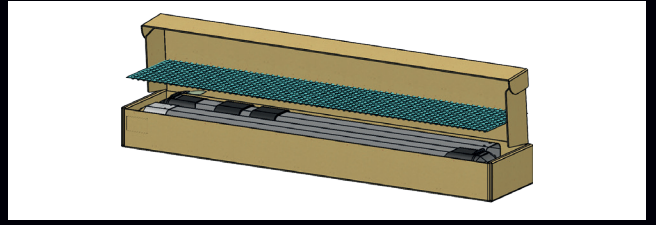
## VARIANTS

The 3m PipeTube Pro comes in two 1.5m sections, whereas the 4m and 5m PipeTube Pro will come with either an additional one or two 1m sections. These can then be connected in between the two halves of the 3m system (RP23) using the same mechanical joining method.

### RP23 - Assembled



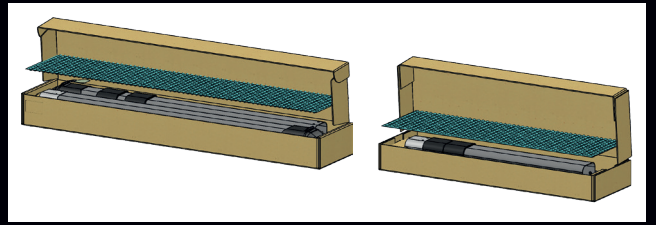
### RP23 - Packaging



### RP24 - Assembled



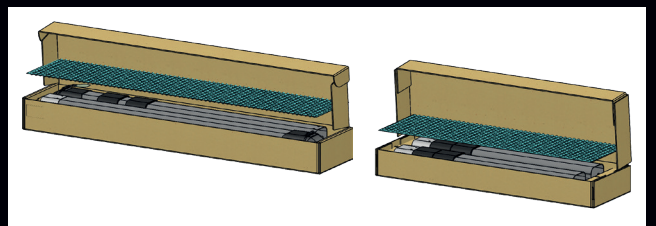
### RP24 - Packaging



### RP25 - Assembled



### RP25 - Packaging



## VARIANTS

Code	Description	Length	Tube Sections
RP23	PipeTube Pro 3m	3m	2 x 1.5m
RP24	PipeTube Pro 4m	4m	2 x 1.5m, 1 x 1m
RP25	PipeTube Pro 5m	5m	2 x 1.5m, 2 x 1m

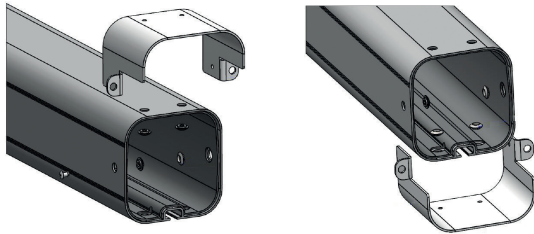
## OPTIONAL SIDE MOUNTING KIT FOR RHINO MODULARRACK



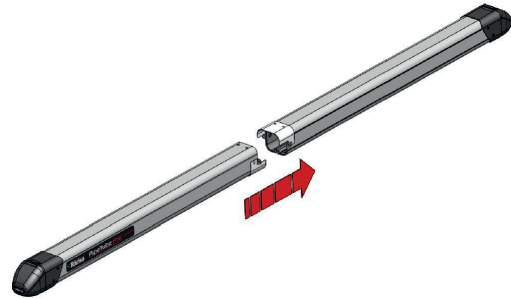
Our side mounting kit is a popular optional extra for the PipeTube Pro. Consisting of two side mounting brackets and all required fixings, this kit allows a 3.0m PipeTube to be mounted to the side of a Rhino ModularRack, enabling full width usage of the rack. One key benefit this provides is the option to transport 8' x 4' boards on the roof of the van, along with the use of a PipeTube.

## PIPETUBE PRO ASSEMBLY

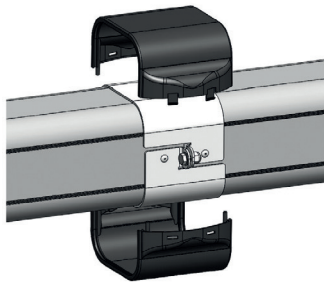
The 3m, 4m and 5m PipeTube Pro's main extrusion comes split into two sections to facilitate easy and cost-effective shipping for our customers. Our team of designers have created an innovative mechanical joining bracket to seamlessly connect two tube extrusions.



Each section of the tube extrusion in a 3m PipeTube Pro comes with part of the joining bracket **already connected**.



The two 1.5m halves of a 3m PipeTube Pro can then be joined together via a quick and easy assembly process.



The bracket is then covered in robust plastic composite casing that matches the nose cone and sleeve on either end.



The completed tube is then ready to be mounted to the vehicle.

### MATERIAL

### WHERE USED

### ADVANTAGES

#### T6 Aluminium Alloy

- Main body

- Extremely durable, high tensile and yield strength
- Excellent weight to strength ratio
- Scratch resistant

#### Glass Filled Nylon

- 30% Glass filled nylon PA6

- Nose Cone  
- End Cap Sleeve

- Tensile strength greater than standard nylon
- Increased stability when exposed to temperature changes

#### Steel

- DP600 Steel  
- Stainless Steel 303  
- Mild Steel

- Lock Hasp  
- Hinge Pin  
- Bulkhead

#### Fixings

- M8x35mm Square Neck Coach Screw
- 'T' Track Lock Plate M8
- M8 A2 form B Washer
- M8 A2 Nyloc Nut. Type P

#### Tools required

- 2x Spanner 13mm

- 1x Step/Ladder

- 1x Measuring tape

