



The **Rhino SafeClamp** incorporates strength, speed and style to provide a revolutionary ladder clamping system.

The use of a composite beam structure and stainless steel anchor hook offers high strength, whilst providing excellent corrosion resistance. The innovative one-touch clamping method ensures that the operation is five times quicker than traditional screw-down ladder clamps.

The lock keeps the system and your ladders secured in place, minimising rattling and reducing damage to your ladders while in transit.

## DIMENSIONS

Dimensions		Measurements
Length	L1	455mm
Width	W1	50mm
Height	H1	405mm

## WEIGHT

Code	Weight
RAS21 (one pair)	2.8kg



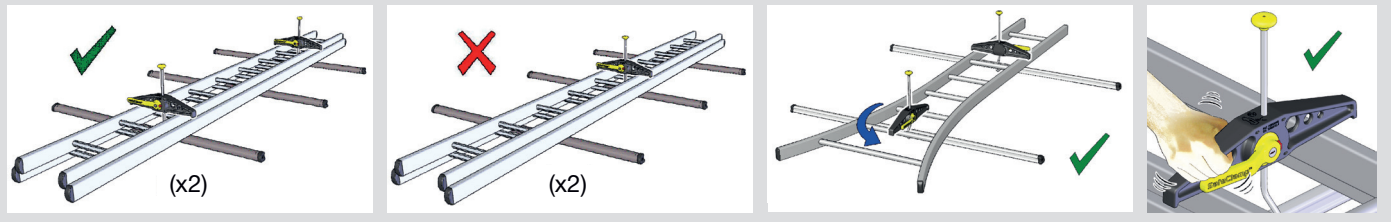
SafeClamp top knob kits are also available (code: SK45)

**Please note:** two SafeClamps must be used to secure one ladder.



## POSITIONING

Typically, the SafeClamp will be positioned across the width of the ladder perpendicular to the ladder side rails, however in some instances (for example with extra wide ladders) this may not be possible. In such cases the SafeClamp can be placed on the ladder's rungs parallel to the side frames. The open side of the hook must always face towards the front of the vehicle.



### MATERIAL

Stainless Steel Grade 304

### WHERE USED

- Hook
- Main Beam
- Operating Cam handle
- Top Knob
- Red Safety Catch
- Branded Cover Plate

### ADVANTAGES

- Corrosion resistant, high strength

### Glass Filled Nylon

- Strong, yet lightweight

